

Universal Chart Manager



WheelShopAutomation.com

6100 Getty Drive Suite N
Sherwood Arkansas, 72117
(501) 834-9540

Universal Chart Manager



**Arkansas Industrial
Computing, Inc.**

WheelShopAutomation.com

6100 Getty Drive Suite N
Sherwood Arkansas, 72117
(501) 834-9540

Installing Universal Press Recorder

Note: You must have administrative rights on your computer to install Universal Press Recorder. If you do not have administrative rights, speak with your company's computer system administrator.

To run Universal Press Recorder software, you must first install it on your computer's hard drive.

1. Insert the Universal Press Recorder CD into your CD-ROM drive. The install screen appears.

If the install does not start automatically, select Start -> Run, type D:\Install.exe and click OK (replace D: with your CD drive)

2. Click Next to begin the installation.

3. Select the components you wish to install

Borland Database Engine -	Required for most installations.
Universal Press Recorder (UPR) -	Recording software. Requires hardware connected to press.
Universal Chart Manager (UCM) -	Used to review charts created by Universal Press Recorder.
UPR Database Server -	Data server required by UPR and UCM. Only one instance of this is required and is typically installed on the same computer as UPR.
Primary Database Files -	Paradox database files. Only one instance of this is required and should be installed on the same computer as UPR Server
Backup Database Files -	Paradox database files. Only one instance of this is required and should be installed on a secondary hard disk drive on the same computer as Primary Database Files.
Borland Database Desktop -	Diagnostics utility for paradox database tables. (Not required). Typically installed on the same computer as the Primary Database Files.
Prodave Comm Driver -	Hardware driver for Spike Control Option using Siemens S7-200 DAQ interface.
InstaCal DAS08 Driver -	Hardware driver for Spike Control Option using InstaCal DAS08 interface.

4. Click Next to begin installation. Follow the prompts on your screen.

Universal Chart Manager

© 1996-2013 Arkansas Industrial Computing, Inc. All rights reserved.

No parts of this work may be reproduced in any form or by any means - graphic, electronic, or mechanical, including photocopying, recording, taping, or information storage and retrieval systems - without the written permission of the publisher.

Products that are referred to in this document may be either trademarks and/or registered trademarks of the respective owners. The publisher and the author make no claim to these trademarks.

While every precaution has been taken in the preparation of this document, the publisher and the author assume no responsibility for errors or omissions, or for damages resulting from the use of information contained in this document or from the use of programs and source code that may accompany it. In no event shall the publisher and the author be liable for any loss of profit or any other commercial damage caused or alleged to have been caused directly or indirectly by this document.

Table of Contents

1 Overview	5
2 Main Screen	6
3 File Menu	7
4 Tools Menu	8
5 Reports Menu	9
6 Help Menu	10
7 Configure Database Server Connection(s)	11
8 Configure Chart Display Properties	12
9 Configure Report Options	13
10 Add a new user to the database	14
11 Add a new customer to the database	16
12 Search for a specific wheel serial number	18
13 Review all charts at the end of shift/day	19

1 Overview

Universal Chart Manager Version 5

The Universal Chart Manager program is part of the Wheel Shop Management System. It is used to view and print assembly reports, edit the data collected for an assembly, manage the user and customer lists and view/print reports. The Chart Manager accesses data from the database server via the TCP/IP protocol and works with Microsoft Windows 95/98, Windows NT 4, and Windows 2000.

The default installation folder is C:\Program Files\Wheel Shop Automation\Chart Manager

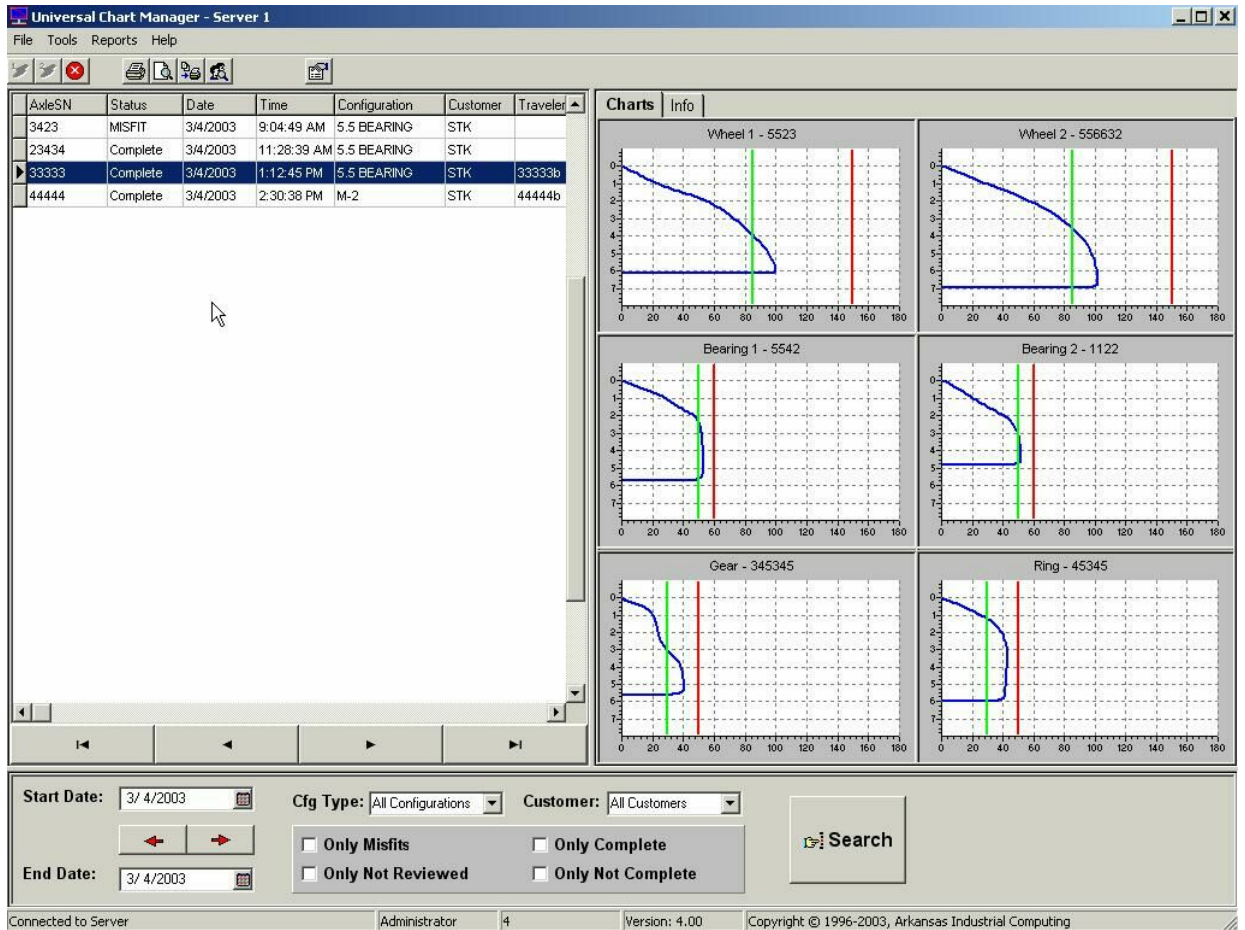
Network connectivity to the database server is required.



Copyright © 1996-2008, Arkansas Industrial Computing, Inc., All Rights Reserved.

2 Main Screen

The main screen displays a sequential list of wheels in the list box on the left and the wheel mounting graphs on the right. Select the starting and ending dates for the current search using the edit boxes at the bottom of the screen. A specific wheelset configuration, and/or customer can be selected to limit the search results. The Only Misfits checkbox can be checked to show only misfit assemblies in the search results. The Only Not Reviewed checkbox can be checked to display only mounting charts which have not been reviewed by the supervisor yet. The Only Complete and Only Not Complete check boxes can be selected to show only those assemblies where all items are mounted or only those assemblies where at least one item is not mounted, respectively.



3 File Menu

Preferences - Select this item to show the setup screen.

Email -> Current - Create email and attach currently selected report (requires Microsoft Outlook).

Email -> All - Create email and attach all reports in current search list (requires Microsoft Outlook).

Export - Open the Export dialog. Use this to export assemblies to XML or csv

Import - Open the Import dialog. Use this to import assemblies from XML exports into your database

Print -> Current - Print the currently selected assembly report.

Print -> Preview Current - Preview on-screen the currently selected assembly report.

Print -> All - Print all of the assembly reports in the current search list.

Print -> Preview All - Preview on-screen all of the assembly reports in the current search list.

Connect to Server 1 - Connect to Database Server at address 1. Disabled if already connected.

Connect to Server 2 - Connect to Database Server at address 2. Disabled if already connected.

DisConnect - Disconnect from both Database Servers. Will be disabled if not connected.

Exit - Select this item to exit the program.



4 Tools Menu

Reviewing Mode - Select this to review each assembly and mark the database record with the reviewer's initials. Once an assembly has been reviewed, it cannot be changed.

Assembly Builder - Select this item to create and modify Assembly Types.

Modify Users - Select this item to add or edit usernames and passwords.

Modify Customers - Select this item to add or edit customer names.

Edit Axle Table - Select this item to add or modify entries in the axle table.

Search For - Select this item to search for serial numbers.

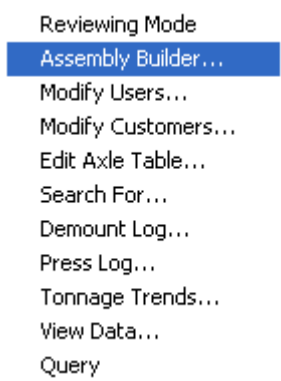
Demount Log - Select this item to view, add, delete, or edit items in the demount log.

Press Log - Select this item to view the press log.

Tonnage Trends - Select this item to display a graph of mounting tonnages.

View Data - Select this item to view the database tables.

Query - Select this item to open a generic query dialog that can be used to return data from a SQL query.



5 Reports Menu

Daily Production Report - Select this item to display a tabulated list of all assemblies for the date selected.

Date Range Production Report - Select this item to display a tabulated list of all assemblies for the date range selected.

Misfit Report - Select this item to display a report of all misfits in the current search range.

Demount Report - Select this item to display a report of all demounted components in the current search range.

The screenshot shows a dialog box titled "Report Selection" with a close button (X) in the top right corner. The dialog is divided into two main sections: "Select Report Type" and "Production Report Options".

Select Report Type:

- Daily Production Report: A date field contains "3/ 6/2003" with a calendar icon.
- Date Range Production Report: Two date fields are present. The "From" field contains "3/ 5/2003" and the "To" field contains "3/ 5/2003", both with calendar icons.
- Misfit Report: Two date fields are present. The "From" field contains "3/ 5/2003" and the "To" field contains "3/ 5/2003", both with calendar icons.
- DeMount Report: Two date fields are present. The "From" field contains "3/ 5/2003" and the "To" field contains "3/ 5/2003", both with calendar icons.

Production Report Options:

- Customer: A dropdown menu is set to "All Customers".
- Cfg Type: A dropdown menu is set to "All Configurations".
- Only Misfits
- Only Complete
- Only Not Complete

On the right side of the dialog, there are three buttons: "Print" (with a dotted border), "Preview", and "Cancel".

6 Help Menu

Contents - Displays the Universal Chart Manager Help file table of contents.

Index - Displays the Universal Chart Manager Help file index.

About - Display the program about box.



7 Configure Database Server Connection(s)

Universal Chart Manager can be configured to connect up to two Database Servers. Typically this is done when there are two presses in a shop and they each have their own database. By allowing Chart Manager to connect to both Database Servers assemblies from both presses can be displayed.

Type the IP address of the first server in the Server Address box. Selecting Ping will verify the connection to the server.

Type the IP address of the second server in the Server2 Address box. Selecting Ping will verify the connection to the server.

Leave both Server Port and Server2 Port to their default values (9000) unless you are sure of these values.

Program Settings

Program | Charts | Reports | Export

Server Address: 127.0.0.1 [Ping]

Server Port: 9000

Server2 Address: 192.168.70.10 [Ping]

Server2 Port: 9000

Wheel 1 Name: Wheel 1

Wheel 2 Name: Wheel 2

Bearing 1 Name: Bearing 1

Bearing 2 Name: Bearing 2

Disc 1 Name: Disc 1

Disc 2 Name: Disc 2

Gear Name: Gear

Ring Name: Ring

Number of days to maintain log file: 180

Additional Data Count: 10 50

[X] Cancel [OK]

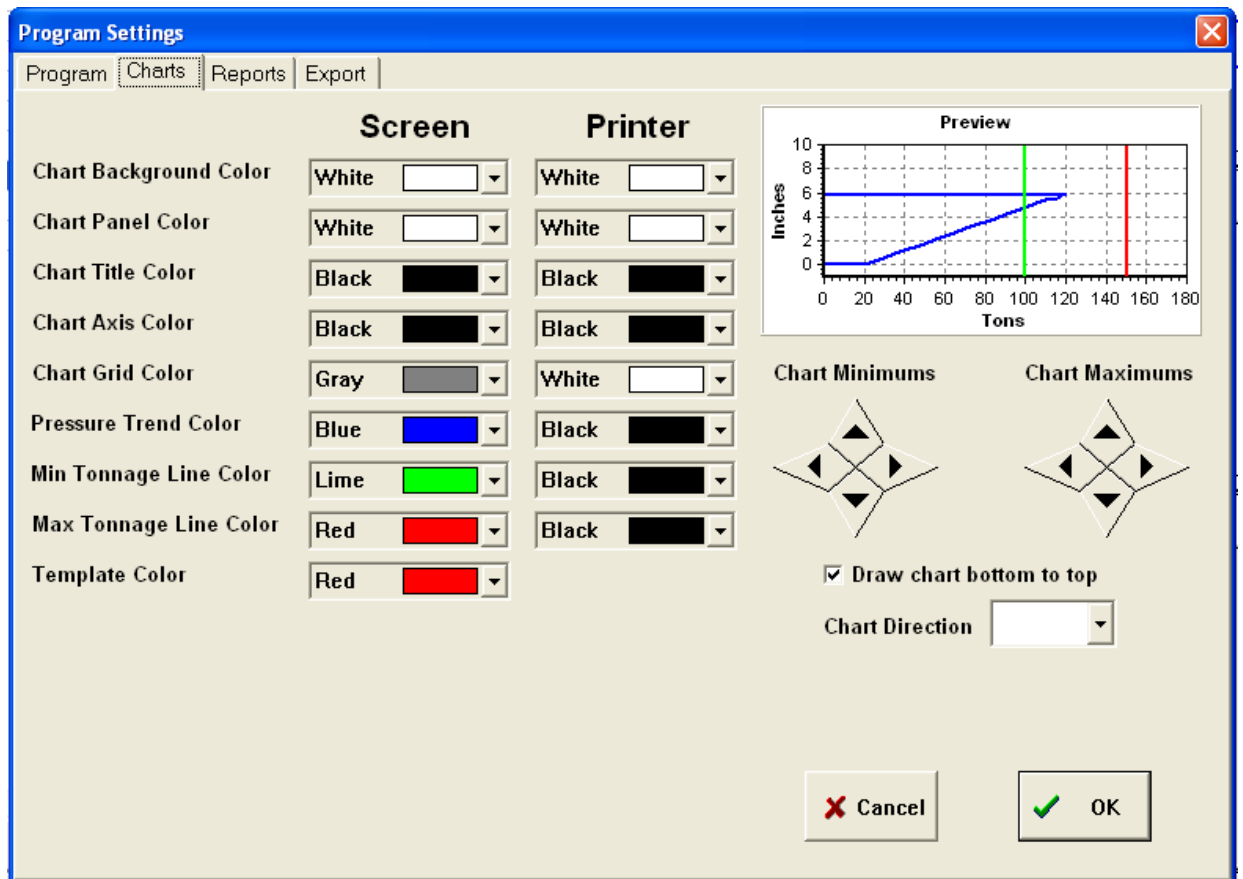
8 Configure Chart Display Properties

Select the chart colors. The colors under the Screen column are what appear on the computer monitor. The colors under the Printer column are used for printing. If you have a color printer you may select any colors available. If you have a black and white printer only select black, white, or shades of gray.

Adjust the chart axis using the "Chart Minimums" and "Chart Maximums" spin buttons. The "Preview" chart demonstrates how the charts will look after all changes have been made.

The chart can be rotated using the "Chart Direction" listbox and it can be inverted using the "Draw chart bottom to top" checkbox.

Press OK to save changes. Press Cancel to abort changes

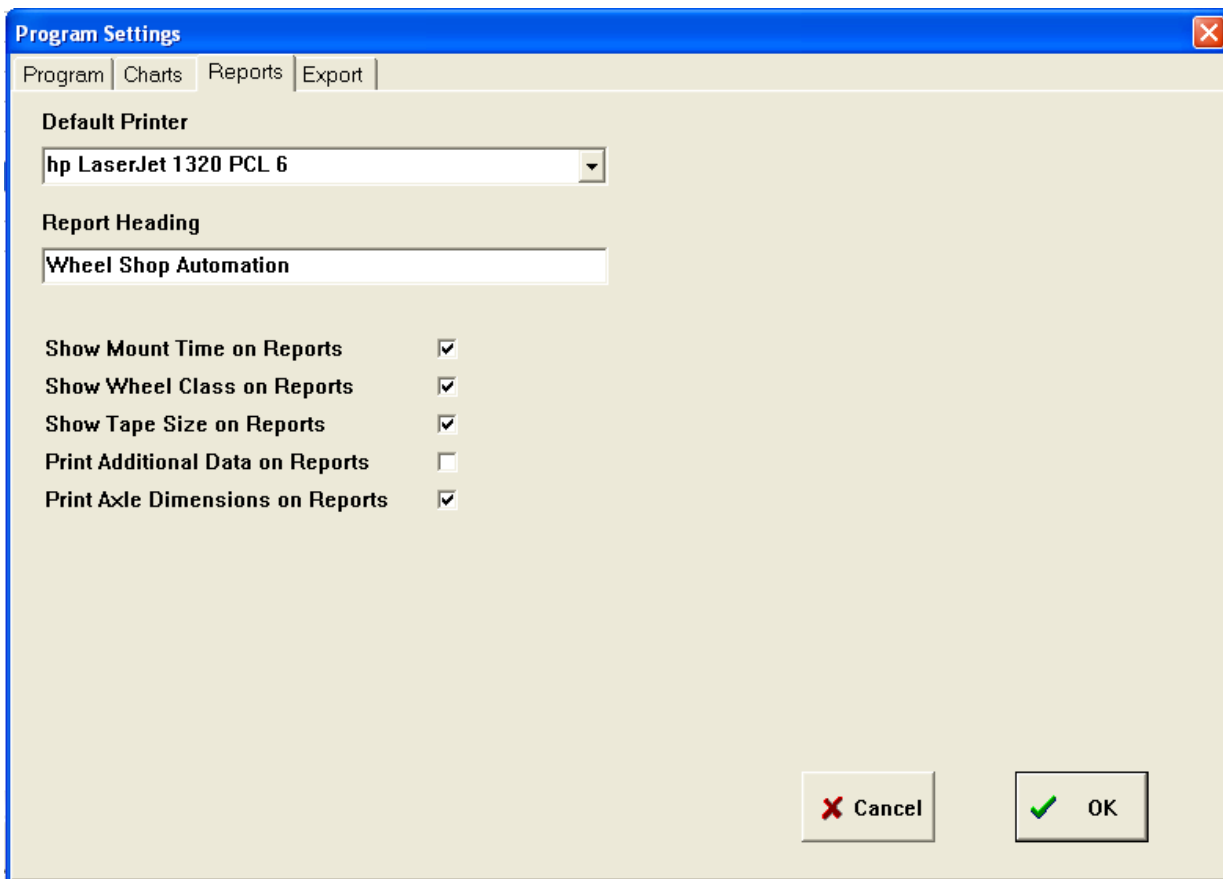


9 Configure Report Options

Select the printer to use as the default printer using the dropdown listbox.

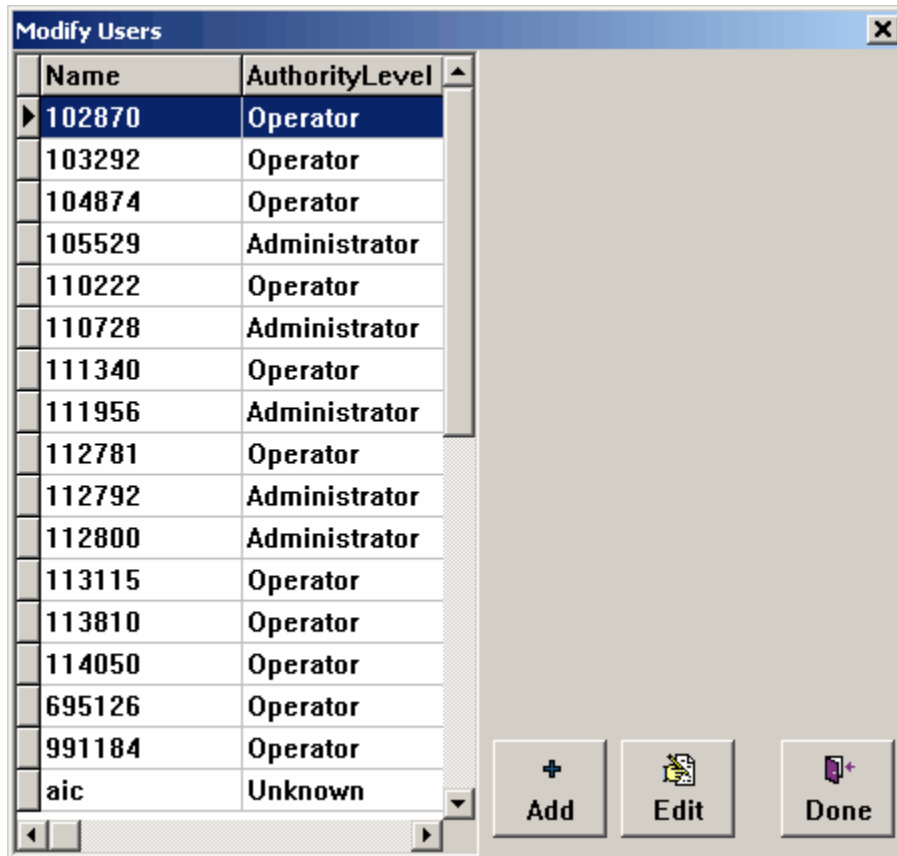
Enter the report heading in the edit box. This can be anything, but is typically the shop's name and/or location.

Select the report options by clicking the checkbox to the right of each option.



10 Add a new user to the database

Select Modify Users from the Tools Menu.



Press the Add button.

Name	AuthorityLevel
102870	Operator
103292	Operator
104874	Operator
105529	Administrator
110222	Operator
110728	Administrator
111340	Operator
111956	Administrator
112781	Operator
112792	Administrator
112800	Administrator
113115	Operator
113810	Operator
114050	Operator
695126	Operator
991184	Operator
a/c	Unknown

UserName:
[Text Field]

Password:
[Text Field]

Verify Password:
[Text Field]

Authority Level

Operator
 Technician
 Supervisor
 Administrator

Save Cancel

+ Add Edit Done

Enter a Username.

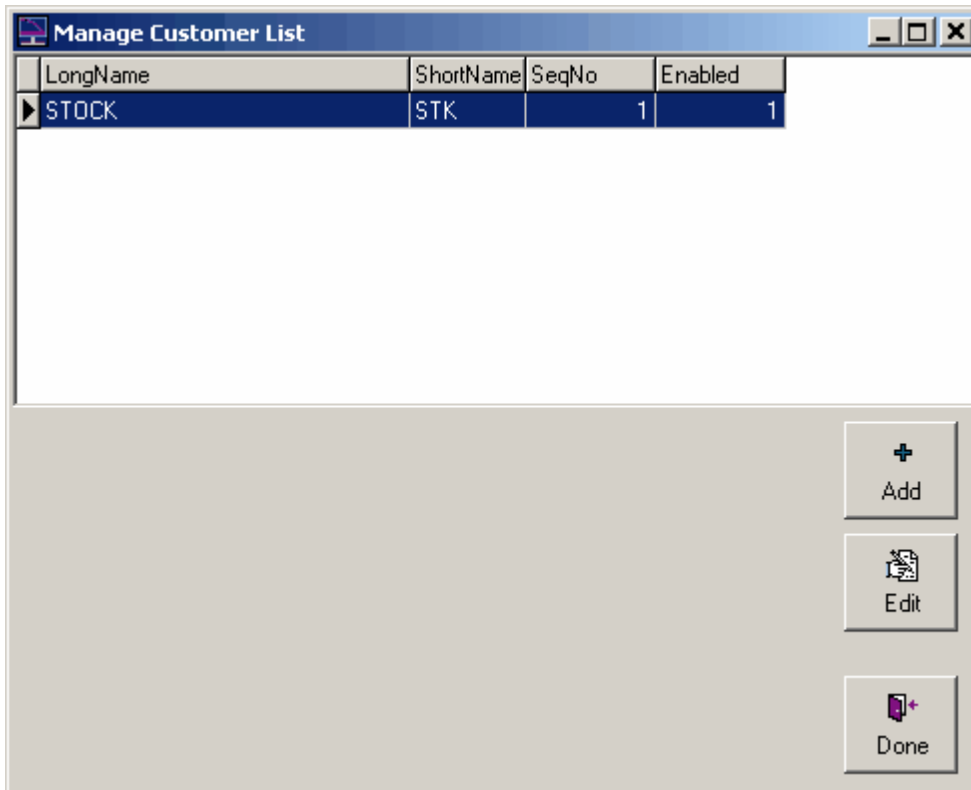
Enter a password for this user. You must enter the password twice to verify.

Select the authority level for this user.

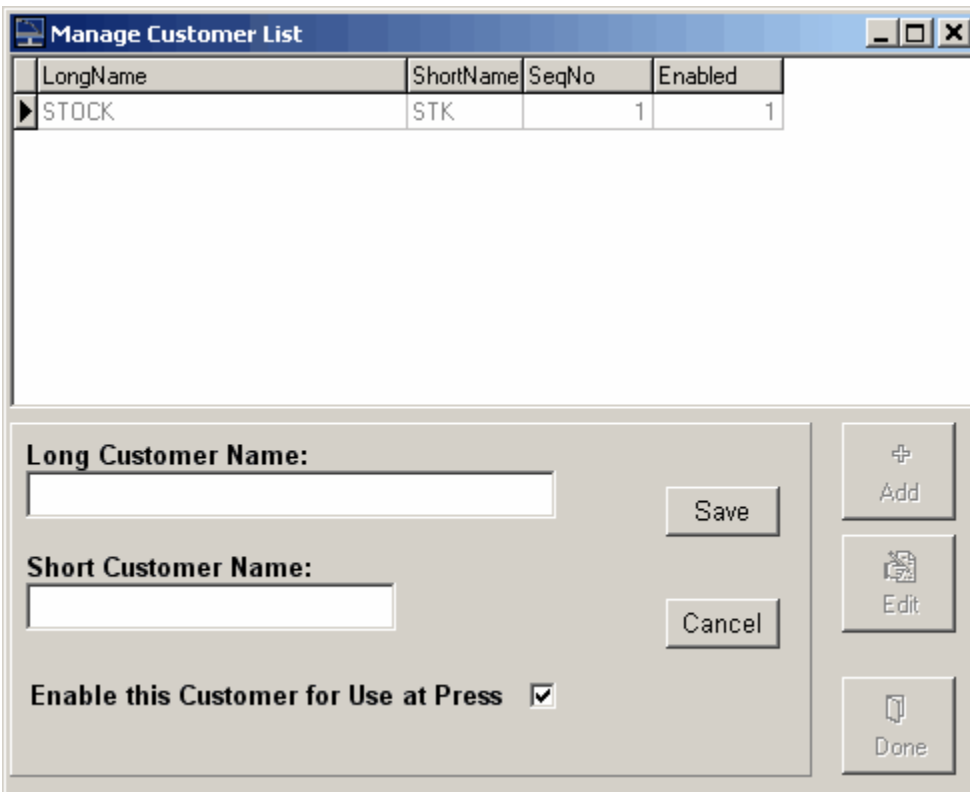
Press the Save button.

11 Add a new customer to the database

Select Modify Customers from the Tools Menu.



Press the Add button.



LongName	ShortName	SeqNo	Enabled
STOCK	STK	1	1

Long Customer Name:

Short Customer Name:

Enable this Customer for Use at Press

Buttons: Add, Edit, Done, Save, Cancel

Enter a long display name for this customer.

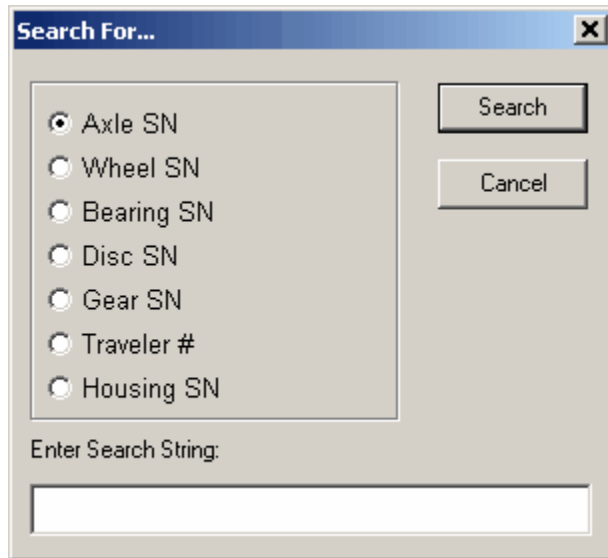
Enter a short display name for this customer.

Check the Enable this Customer for Use checkbox to allow the customer to be selected at the wheel press.

Press the Save button.

12 Search for a specific wheel serial number

Select Search For from the Tools Menu.



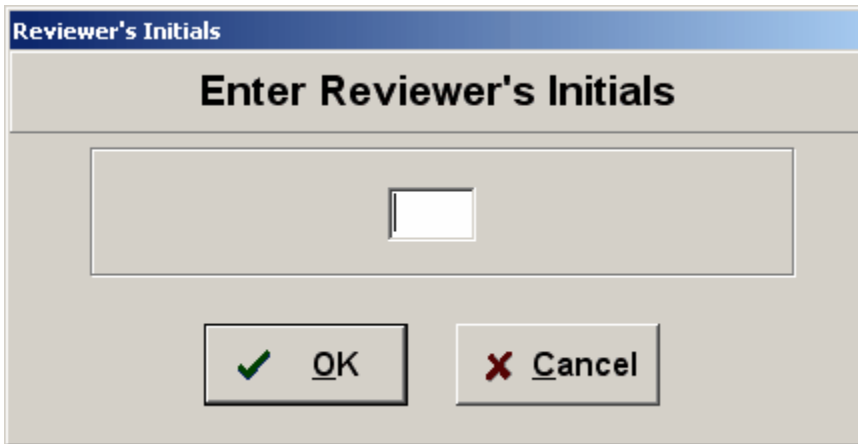
Select the component type.

Enter the serial number to search for.

Press the Search button to begin the search.

13 Review all charts at the end of shift/day

Select Reviewing Mode from the Tools Menu.



The dialog box titled "Reviewer's Initials" has a blue header bar. Below the header is a grey title bar with the text "Enter Reviewer's Initials". In the center is a large, empty white text input field. At the bottom, there are two buttons: "OK" with a green checkmark icon and "Cancel" with a red 'X' icon.

Enter your initials in the Reviewer's initials box.



The dialog box titled "Reviewing Charts" has a blue header bar. On the left is a "Stop" button with a red octagonal stop sign icon. To the right is a "Mark as Reviewed" button with a green checkmark icon. Below these are two buttons: "Previous" with a blue left-pointing arrow and "Next" with a blue right-pointing arrow.

Move to the top of the current search list.

Press the Mark as Reviewed button for each assembly to indicate that you have reviewed the mounting charts for correctness per Association of American Railroad requirements.

System Requirements:

- Windows 2000/XP/NT 4.0 SP3 -Pentium III 1.0 gigahertz (GHz) processor or faster (2.0 GHz is recommended)
- At least 256 megabytes (MB) of RAM (1 GB is recommended)
- At least 10 gigabytes (GB) of available space on the hard disk
- CD-ROM or DVD-ROM drive
- Keyboard and a Microsoft Mouse or some other compatible pointing device
- Video adapter and monitor with Super VGA (800 x 600) or higher resolution