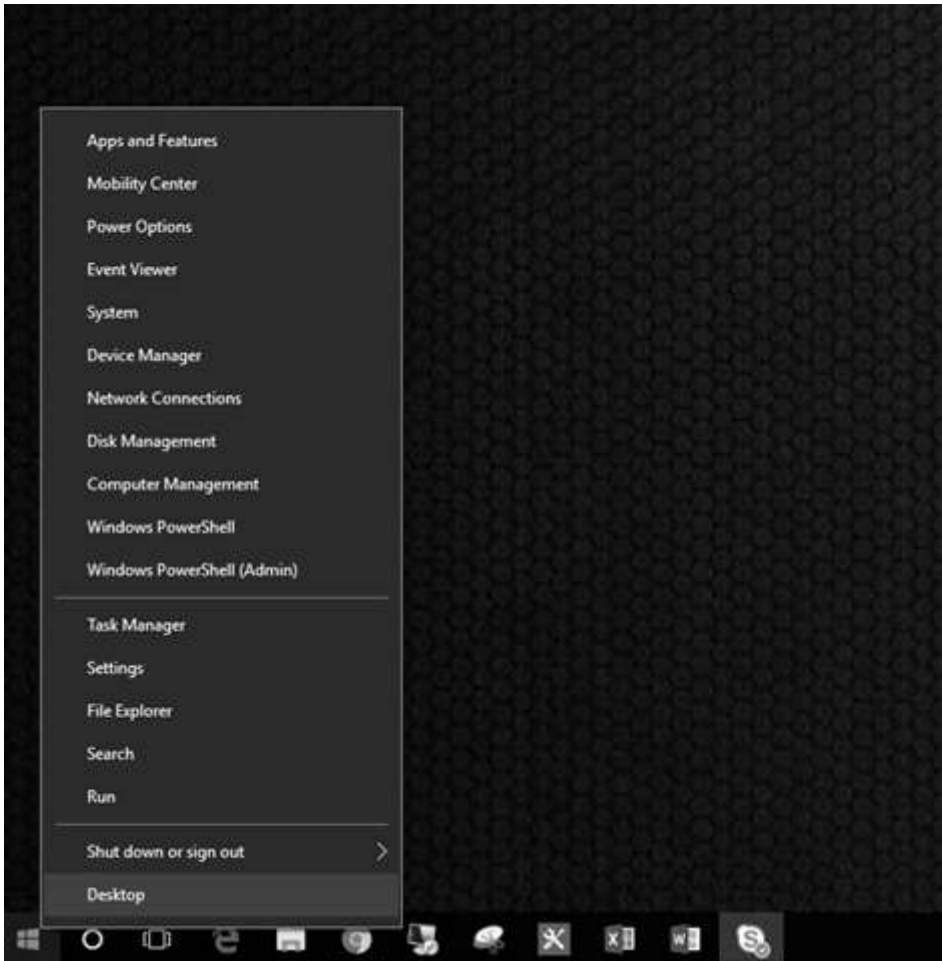


# Identify and Configure COM port in Windows 10

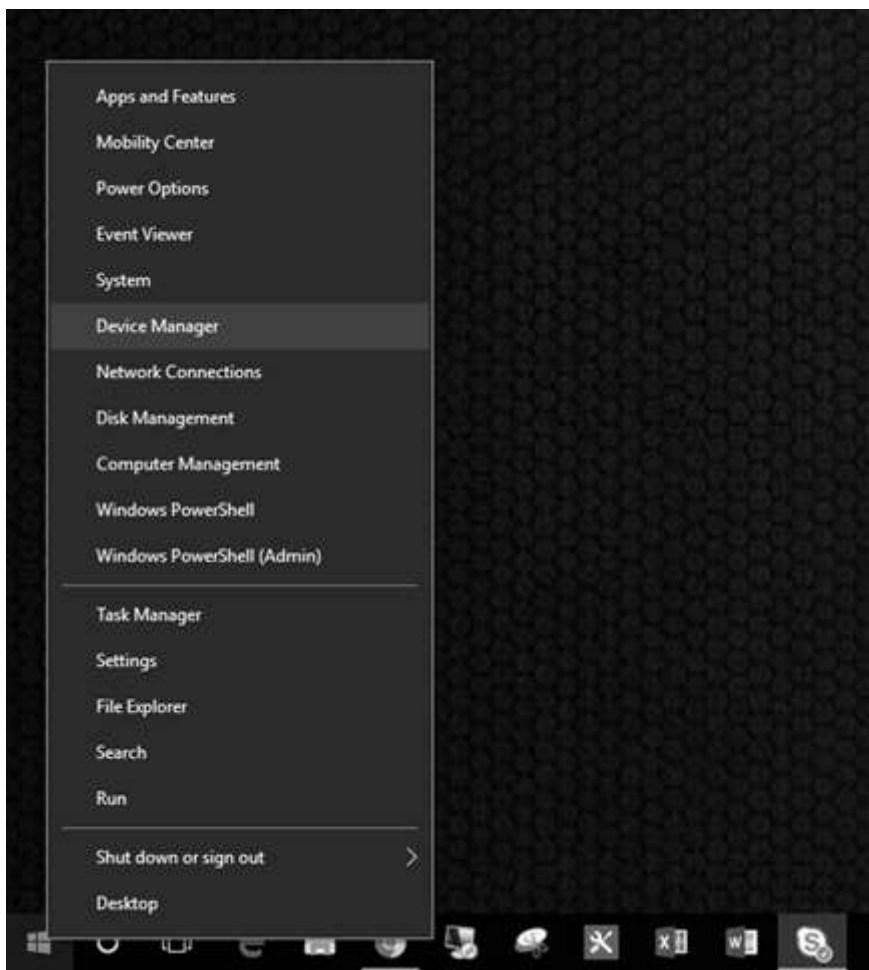
Wheel Press Recorder V5 has a limited number of COM ports available (1 through 16). Windows auto assigns com port numbers to serial devices based on the next unused “port”. If you have reached the maximum allowed COM ports for the Wheel press recorder, the COM port number will need to be manually changed. This article will provide you with the steps to change the COM port number when adding a new barcode scanner to your system.

Before you get started be sure that you are logged into Windows as a user with Administrative rights.

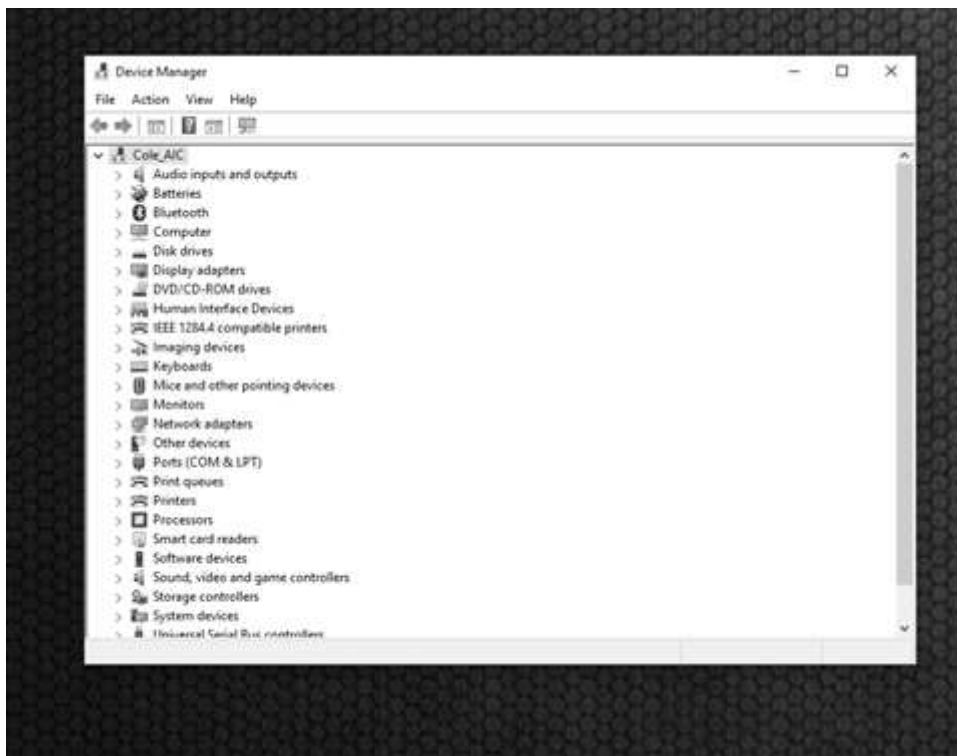
From the Windows Desktop, right click on the ‘Start Menu’ button.



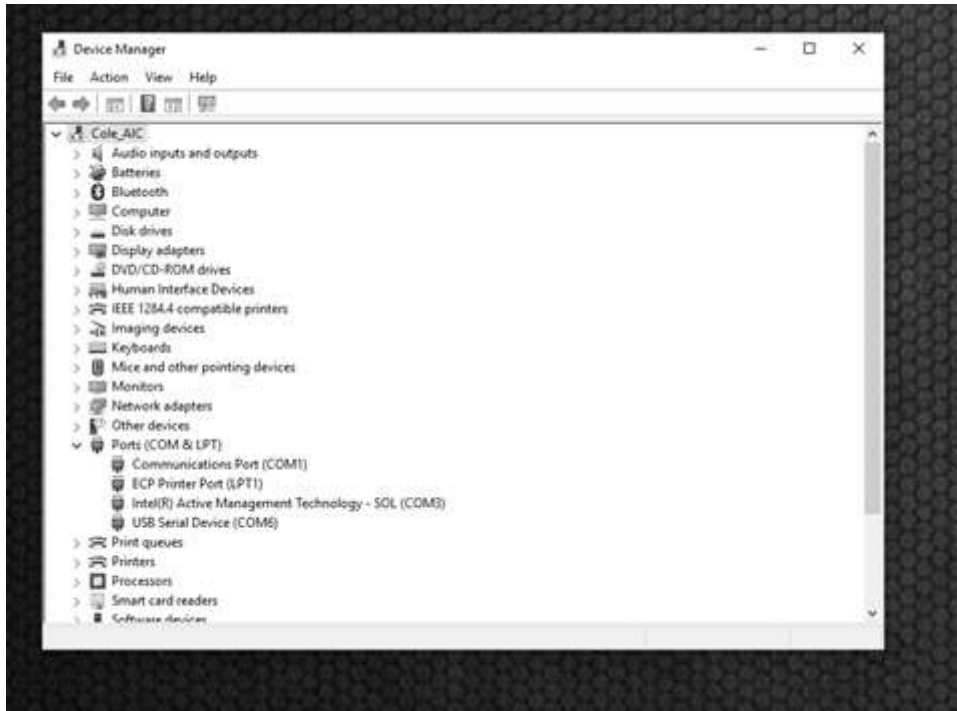
Left click on ‘Device Manager’.



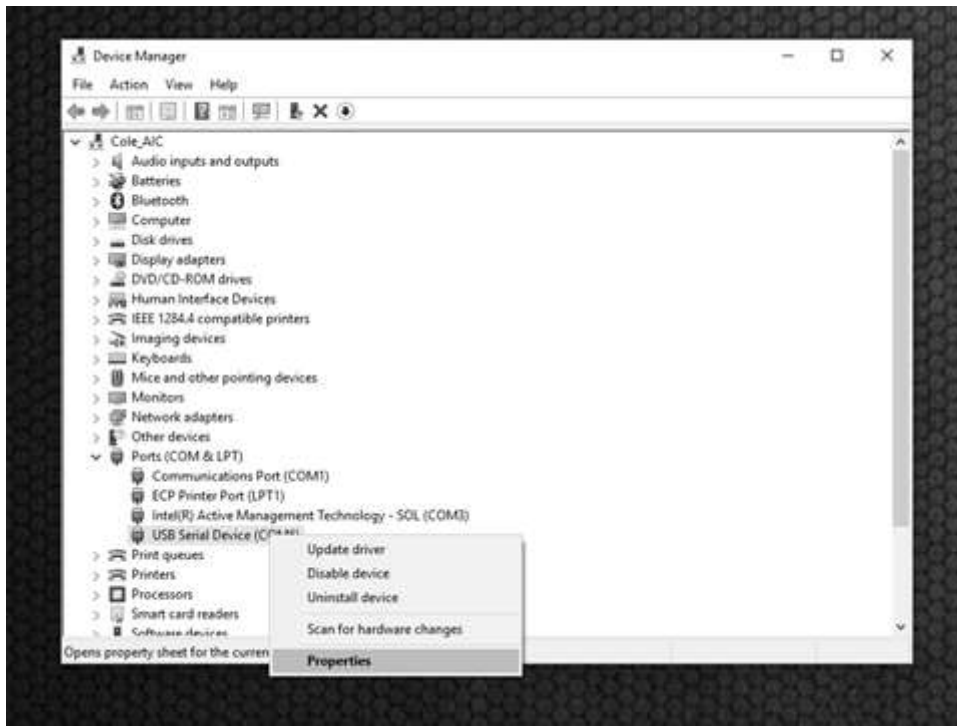
Device manager will now be displayed with a section near the bottom that says 'Ports (COM & LPT)'.



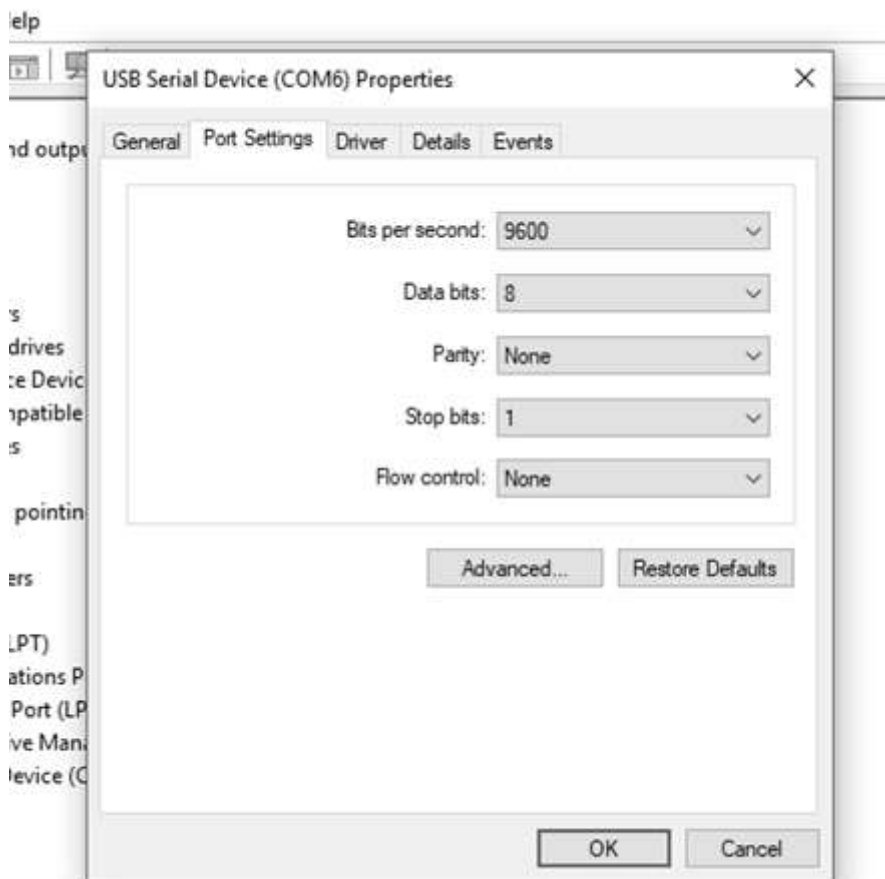
Left click the arrow next to 'Ports (COM & LPT)' to expand the selection. If a COM port listed is shown to be at a value larger than COM16 then proceed to the next step.



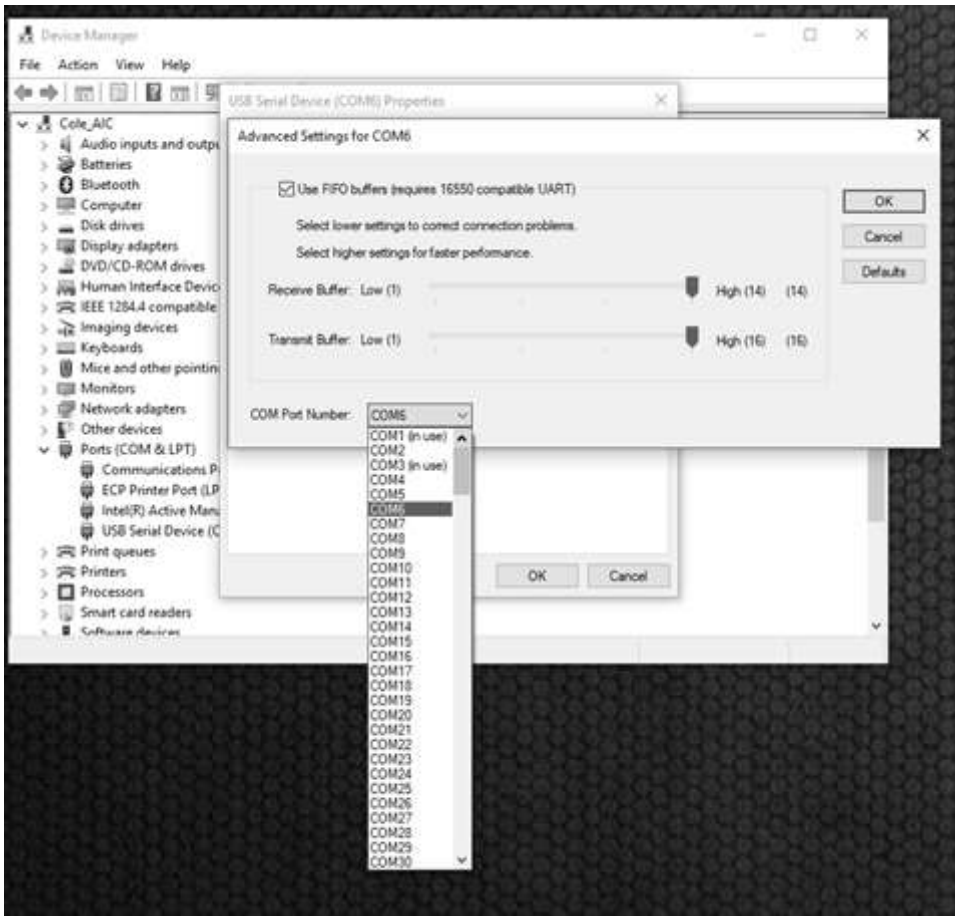
Right click on 'USB Serial Device' and left click 'Properties'.



Left click on the 'Port Settings' tab.



Click the 'Advanced' button then click the 'COM Port Number' dropdown menu. This will display all available COM port numbers.



Select an available COM Port from 1 up to 16, click 'Ok', and exit all windows.